

# Residential Steam Boilers



## 16 Series Gas-Fired Steam Boiler



### The Pennco 16 Series Boiler is an Affordable Gas-Fired Steam Heating Solution

#### Quality Heat Exchanger Design:

The 16 Series features a dependable cast iron heat exchanger with cast iron push nipples. The sections and push nipples expand at the same rate when heated. By using similar materials instead of less expensive gaskets or steel push nipples, the boiler maintains a water tight seal.

#### Efficiency:

The 16 Series provides an annual fuel utilization efficiency (AFUE) of up to 82.7% as certified by the US Department of Energy.

#### Easy Installation and Maintenance:

The 16 Series features an integral Draft Hood and Vent Damper. Its low profile, compact design makes it ideal for low clearance installations.

#### Features CycleGard CG400 LWCO:

CycleGard low water cut-off is equipped with an Intermittent Level Test. This important feature adds protection against false signals that can be caused by foam and volatile water conditions inside the boiler. The Intermittent Level Test removes power from the burner at preset intervals. During the test, foam dissipates and the water level stabilizes - allowing CycleGard to monitor the true water level in the boiler assuring safe and accurate operation.

#### Warranty

10 Year Limited Heat Exchanger Warranty

**Pennco SILVER makes Simple Comfort, Affordable.**

www.pennco boilers.com  
PN 240009892 [11/22/21]

# 16 Series

## Gas-Fired Steam Boiler



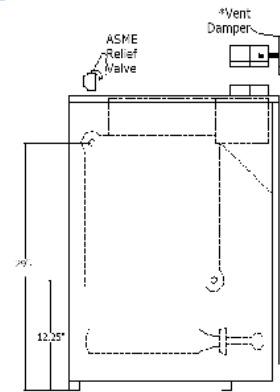
### Standard Equipment:

- Assembled Boiler with Insulated Jacket
- Completely installed and wired gas control system:
  - Titanium Composite Burners
  - Gas Manifold with Orifices
  - Automatic Redundant Combination Gas valve, 24 Volt, with Pilot Filter and Regulator
  - Intermittent Pilot Control
  - Continuous Retry 100% Shut-Off
  - Combination Pilot Burner/Electrode/Flame Sensor and Integral Draft Diverter
- 24 Volt Transformer
- Flame Roll-Out Safety Shut-Off Fuse Link (Roll-Out Switch) with Spare Fuse Link included.  
Blocked Vent Safety Shut-Off Manual Reset Disc Thermostat (Spill Switch)
- Electronic Low Water Cut-Off with 3/4" Probe
- Pressure Limit Control
- Steam Pressure Gauge
- Glass Water Level Gauge
- 3/4" Boiler Drain Valve
- 15 psi ASME Pop Safety Valve
- (2) 2 1/2" Supply Tappings
- (2) 2 1/2" Return Tappings
- (2) 2 1/2" Square Head Pipe Plugs - to plug unused supply and return tappings.

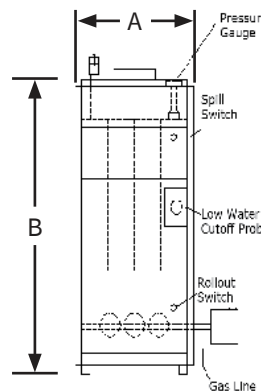
### Optional:

- Propane Conversion Kits Available
- Electronic Water Feeder

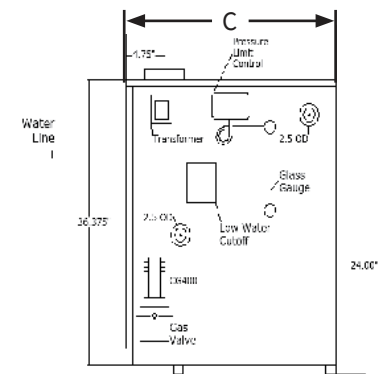
### Specifications:



LEFT SIDE



FRONT



RIGHT SIDE

### AHRI CERTIFIED RATINGS<sup>(1)</sup>

### DIMENSIONS

MODEL	Input MBH	Heating Capacity MBH	Net Steam MBH	Net Steam SQ. FT.	Efficiency AFUE%	Flue Diameter	- A - Width	- B - Height	- C - Depth	Weight Lbs.
1603HSID	75	62	47	196	82.7	5"	11 1/4"	36 3/8"	26 1/2"	297
1604HSID	112	91	68	283	82.0	6"	14 1/2"	36 3/8"	26 1/2"	368
1605HSID	150	122	92	383	82.0	6"	17 3/4"	36 3/8"	26 1/2"	440
1606HSID	187	153	115	479	82.0	7"	21"	36 3/8"	26 1/2"	512
1607HSID	225	183	137	571	82.0	7"	24 1/4"	36 3/8"	26 1/2"	584
1608HSID	262	214	161	671	82.0	7"	27 1/2"	36 3/8"	26 1/2"	659
1609HSID	299	245	184	767	82.0	7"	30 3/4"	36 3/8"	26 1/2"	736

1) MBH = 1,000 Btuh. Btuh = British Thermal Unit Per Hour  
 Input rating for sea level to 2,000 ft. (610m) above sea level. United States, over 2000 ft (610m) above sea level.  
 Reduce input rate 4% for every 1,000 ft (304m) above sea level.  
 Net AHRI steam ratings shown based on piping and pickup allowance of 1.333. Consult manufacturer before selecting boiler for installations having unusual piping and pickup requirements, such as intermittent system operation, extensive piping systems, etc.



ECR International, Inc. 2201 Dwyer Avenue, Utica, NY 13501  
 Tel. 800 253 7900  
 www.ecrinternational.com

www.pennco boilers.com

All specifications subject to change without notice.  
 ©2021 ECR International, Inc.  
 PN 240009892 Rev. [11/22/21]